

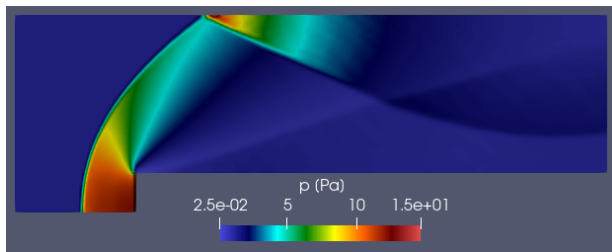
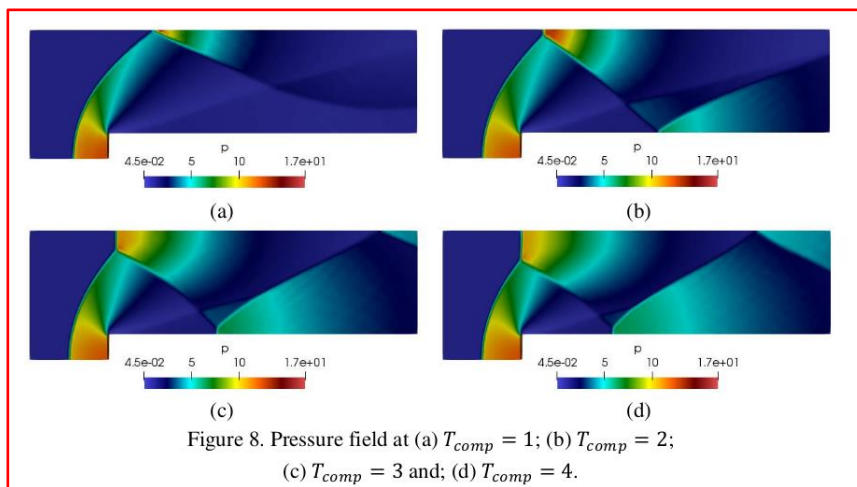
Mach Reflection: Flow over a Forward facing Step

Pranay Kumar Pandey¹

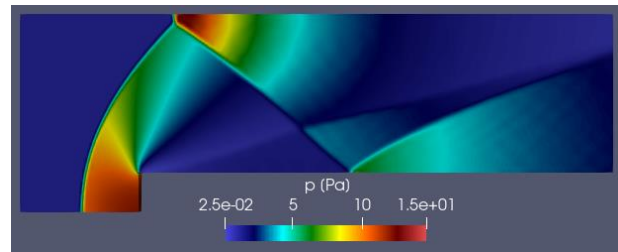
¹Dept. of Aerospace Engineering, Amity University Mumbai, Panvel, Maharashtra 410206

Conclusions

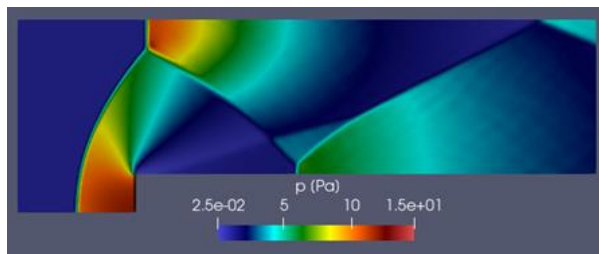
- In this report, comparison is done for the Pressure Field as shown in Fig 8 of the Case Report.
- For comparison purposes, the plot available in the report of the case already i.e solved previously has been bordered with Red Color with thickness 1. It also has Figure title attached to it.
- From the new simulation, we infer that the contours of old and new simulations match.



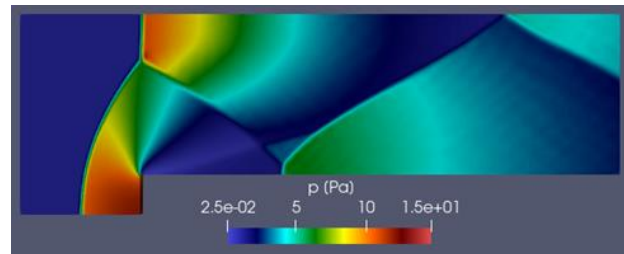
T = 1s



T = 2s



T = 3s



T = 4s